

ATTACHMENT A-1

**A RESOLUTION ACCEPTING THE DRAFT MAP OF CONSERVATION AREAS IN
THE UPPER BOLIN CREEK WATERSHED**

Resolution No. 03/2005-06

WHEREAS, the Carrboro Board of Aldermen seeks to ensure that its existing and proposed policies and regulations are ensure strong stewardship of natural areas in the Bolin Creek Watershed, and

WHEREAS, staff has prepared a draft map for Conservation Areas in the Upper Bolin Creek Watershed,

NOW, THEREFORE BE IT RESOLVED by the Carrboro Board of Aldermen that the Aldermen accept this draft map for Conservation Areas in the Upper Bolin Creek Watershed and direct staff to make final modifications.

ATTACHMENT A-2

**A RESOLUTION REQUESTING THAT THE ORANGE COUNTY BOARD OF
COUNTY COMMISSIONERS CONSIDER OWNERSHIP TRANSFER
OF SELECTED COUNTY-OWNED PARCELS
WITHIN THE CARRBORO CITY LIMITS
Resolution No. 04/2005-06**

WHEREAS, the Carrboro Board of Aldermen seeks to create contiguous areas within the town that provide for integrated natural resource stewardship as well as recreational opportunities for its residents and visitors, and

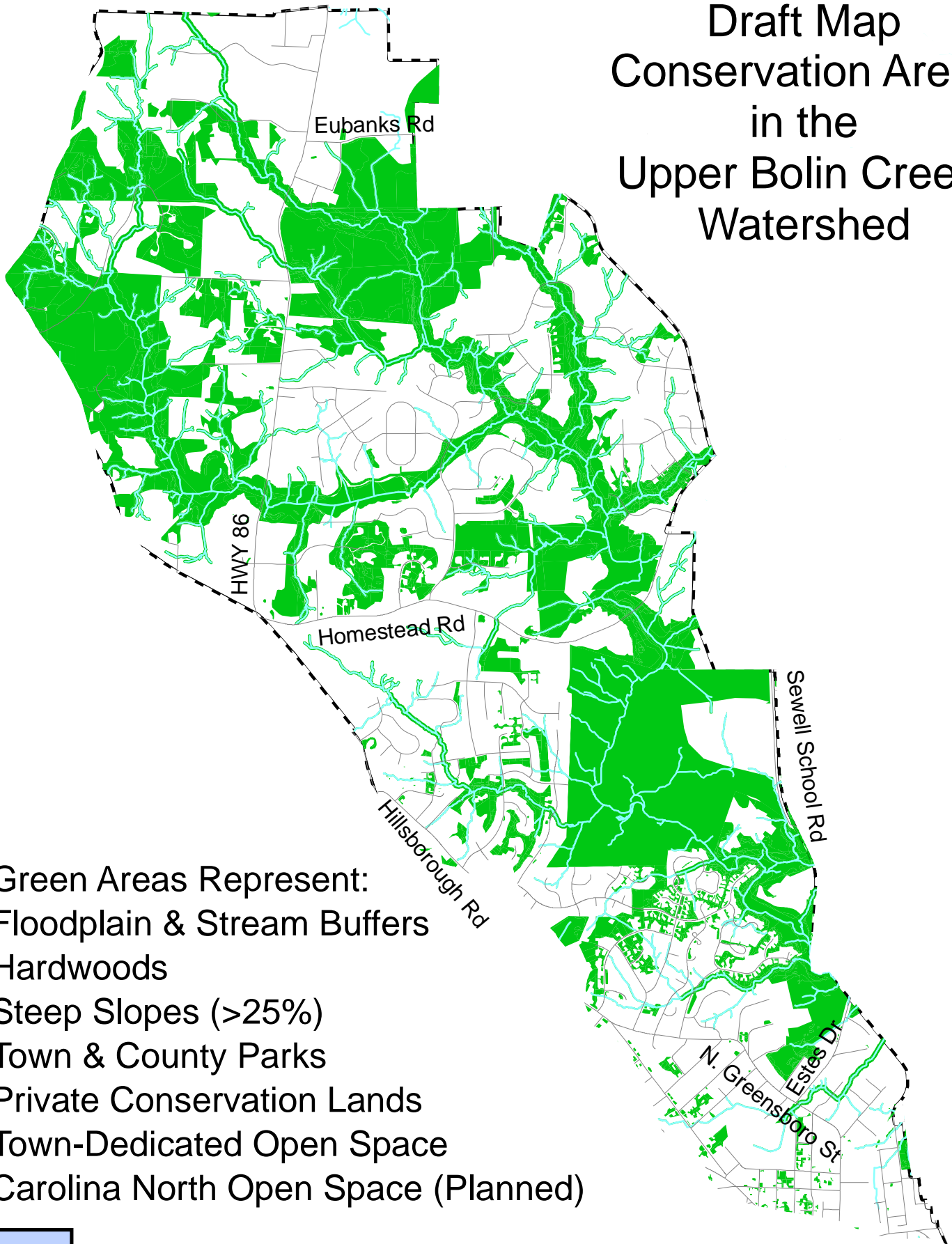
WHEREAS, Orange County currently has title to a parcel (PIN 9778-97-5883; 0.2 acres) adjacent to Baldwin Park in the downtown area of Carrboro, and

WHEREAS, Orange County currently has title to an open space in the Fox Meadow subdivision (PIN 9870-14-9741; 5.0 acres), and

WHEREAS, the Town of Carrboro Recreation & Parks, Public Works, and Planning departments carefully evaluate land use in the Town of Carrboro and maintain all park properties owned by the Town of Carrboro,

NOW, THEREFORE BE IT RESOLVED by the Carrboro Board of Aldermen that the Aldermen respectfully request that the Orange County Board of County Commissioners consider transfer of these properties to the Town of Carrboro.

Draft Map Conservation Areas in the Upper Bolin Creek Watershed



Green Areas Represent:
Floodplain & Stream Buffers
Hardwoods
Steep Slopes (>25%)
Town & County Parks
Private Conservation Lands
Town-Dedicated Open Space
Carolina North Open Space (Planned)

